

\$60.00 6028 3/9/93

MISC FILM CODE  
00009306534

ACREAGE - 22,587.8 ACRES

2.97 AC.  
11272 / 152

3.00 AC.  
6579 / 1492

Vol. 91 Page 214  
PLAT RECORD, TRAVIS COUNTY, TEXAS

SCALE 1" = 100'

10.71 AC.  
0462 / 843

CANYON CREEK SEC. 33-A  
P.B. 88, PG. 126



LOCATION MAP  
(NOT TO SCALE)

CANYON CREEK LAND LTD.  
11513 / 136  
128.607 AC.

LEGEND

- - CONCRETE MONUMENT PROPOSED
- - PIN SET
- - PIN FOUND
- B.L. - BUILDING SETBACK LINE
- P.U.E. - PUBLIC UTILITY EASEMENT
- D.E. - DRAINAGE EASEMENT
- PROPOSED SIDEWALK

TOTAL LOTS - 95

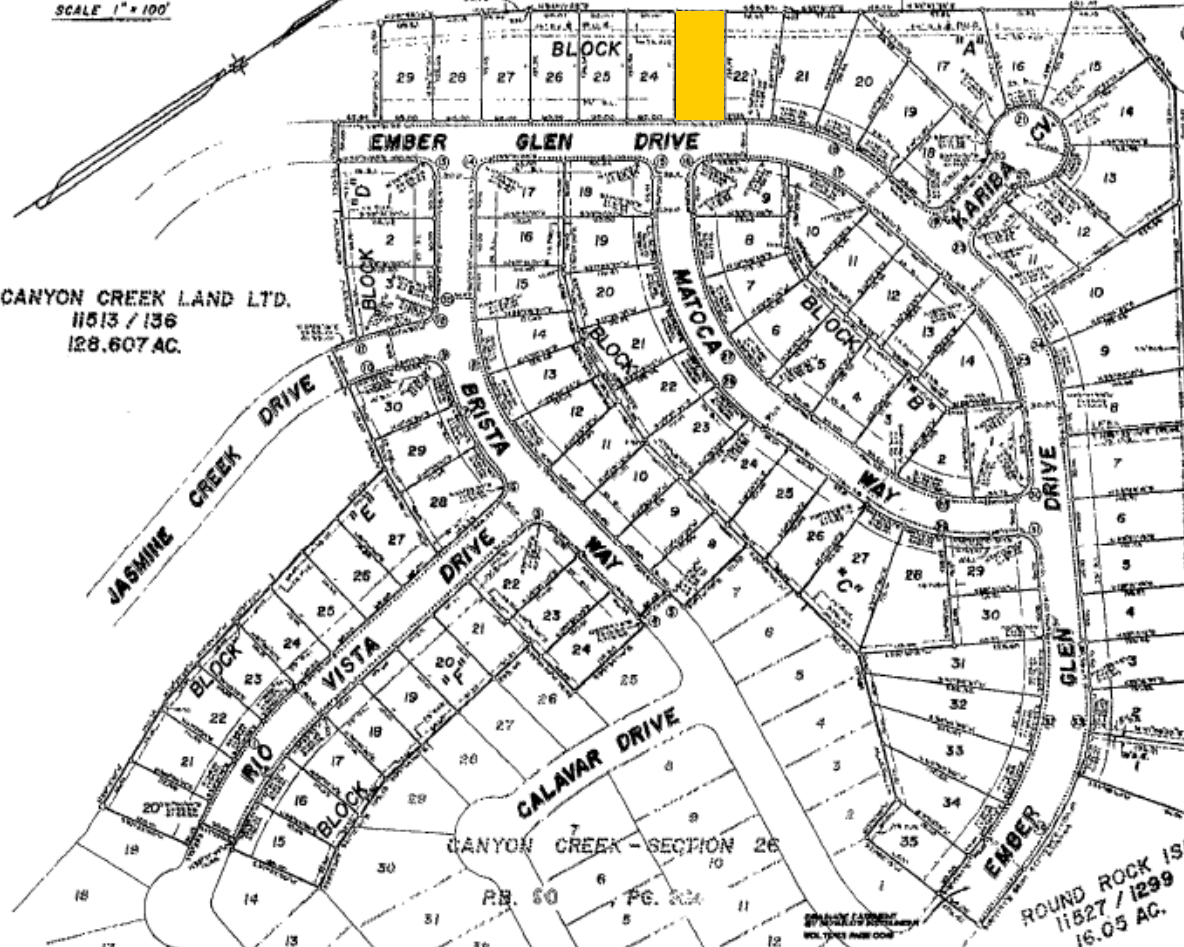
OWNER - CANYON CREEK LAND LTD.  
MR. FRED EPPRIGHT  
407 E. 6th STREET, SUITE 200  
AUSTIN, TEXAS 78701-3756

CANYON CREEK SECTION ONE  
P.B. 85, PG. 150 B-151 B  
GREENBELT, DRAINAGE EASEMENT & P.U.E.



# CANYON CREEK SECTION 27

SHEET 1 OF 2  
CB-85-070.03.2A DATE - MAY 16, 1992



CURVE TABLE

CURVE #	I°	R'	T'	A'	C'	CB'
1	23°04'00"	510.00	104.07	205.32	203.94	823°06'00" W
2	23°04'00"	460.00	93.87	185.19	183.94	M21°06'00" W
3	89°07'59"	20.00	19.70	31.11	28.07	M35°00'00" W
4	61°50'32"	420.00	6.75	13.50	13.50	M00°E' 18" W
5	03°31'51"	470.00	14.49	28.96	28.96	S83°13'56" W
6	88°03'58"	28.00	19.34	38.74	27.80	S55°25'59" E
7	25°09'13"	335.00	74.74	147.07	145.89	S85°03'22" E
8	43°57'00"	285.00	115.00	218.62	213.38	M78°27'30" W
9	87°16'43	20.00	19.07	30.47	27.60	M63°52'53" W
10	11°21'36"	325.00	38.55	77.10	74.23	M16°38'42" W
11	11°21'36"	375.00	37.30	74.35	74.23	M14°33'42" E
12	76°06'13"	20.00	16.23	27.27	25.20	S18°48'46" E
13	90°00'00"	20.00	20.00	31.42	28.28	M78°31'00" W
14	90°00'00"	20.00	20.00	31.42	28.28	M11°25'00" W
15	90°00'00"	20.00	20.00	31.42	28.28	M78°31'00" W
16	90°00'00"	20.00	20.00	31.42	28.28	M11°25'00" W
17	42°37'00"	210.00	83.21	154.58	151.48	M54°39'30" E
18	42°37'00"	260.00	100.54	191.88	187.55	M54°39'30" E
19	90°00'00"	20.00	20.00	31.42	28.28	M30°48'00" E
20	45°59'42"	20.00	9.33	17.45	16.90	M39°11'51" W
21	275°23'50"	50.00	3.22	241.52	241.52	M10°47'53" W
22	45°59'42"	20.00	9.33	17.45	16.90	S10°47'53" W
23	90°00'00"	20.00	20.00	31.42	28.28	S59°12'00" E
24	42°27'00"	260.00	100.98	192.63	188.26	S82°58'30" E
25	42°27'00"	210.00	81.56	155.59	152.03	S82°58'30" E
26	53°36'00"	335.00	169.22	313.39	302.09	S83°17'00" E
27	53°36'00"	285.00	143.96	266.62	257.00	M83°17'00" W
28	41°40'00"	175.00	65.59	127.26	124.48	S49°05'00" W
29	41°40'01"	225.00	85.62	163.63	160.04	S49°05'00" E
30	89°59'59"	20.00	20.00	31.42	28.28	S16°45'01" W
31	90°00'00"	20.00	20.00	31.42	28.28	S73°15'00" W
32	43°27'15"	349.47	139.26	265.04	258.74	M40°01'23" E
33	25°30'50"	240.00	54.34	106.87	105.39	S48°55'36" E
34	17°54'23"	430.00	67.87	124.64	124.09	S27°15'59" E
35	01°23'03"	335.00	4.05	8.09	8.09	S57°10'31" E

ROUND ROCK ISD  
11527 / 1299  
16.05 AC.